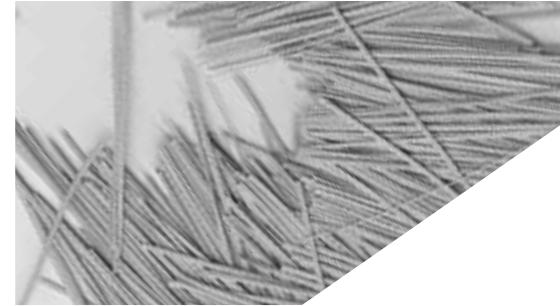


# BarChip MQ58

## Concrete Fibre Reinforcement

BarChip MQ58 is a high performance structural synthetic fibre concrete reinforcement, optimised for pavements and industrial floors. The unique composition of BarChip MQ58 enables a perfect, fibre free finish on your concrete works.

Work with BarChip and together we'll unlock the full potential of your concrete mix.



Packaged in pucks in mulchable paper bags and big bags for automated dosing. Safely stacked 3 pallets high on recyclable HDPE pallets.



### Benefits

- Comprehensive design and technical support
- Redistributes load - increased ductility / toughness
- Eliminates corrosion - long term durability
- Eliminates set-up of steel mesh
- Increases daily slab pour rates up to 50%
- Increases abrasion and impact protection
- 70% reduction in carbon footprint compared to steel
- Safer and lighter to handle than steel
- Reduced wear on concrete pumps and hoses
- BarChip fibre is UV stabilised to resist solar deterioration
- Weather proof packaging on multi-stack HDPE pallets

### Product Features (see SDS for more details)

Characteristic	BarChip MQ58	Standard
Fibre Class II	For structural use in concrete, mortar and grout	EN 14889-2
Tensile Strength	640 MPa	JIS L 1013/ISO 2062
Young's Modulus	10 GPa	JIS L 1013/ISO 2062
Length	58 mm	
Anchorage	Continuous Embossing	
Base Material	Bi-Component Polymer	
Alkali Resistance	Excellent	
CE Certification		1029-CPR-GB19/964030
ISO 9001:2015 Certification		0044943

### Dosage

BarChip MQ58 has a regular dosage rate of 2.5 kg to 5 kg per cubic metre. Dosage rate should be determined based on performance requirements. Regular dose rates may reduce measured slump.

### Mixing

BarChip MQ58 is added "Bags and All" to the mixer with initial batch water. Follow with dry materials and mix at high speed for the required revolutions. Alternative batching techniques can be applied.

Undertake mix optimisation with BarChip specialists to ensure you're getting optimal output from your concrete mix. For more information view BarChip's batching and mixing guide.

### Pumping

BarChip MQ58 can be pumped through 50 mm rubber hoses without difficulty. Precautions should be taken to ensure the fibres can pass freely through the hopper grate.

### Handling and Storage

BarChip MQ58 is packed in pucks in 5 kg mulchable paper bags (450 kg per pallet) and supplied on durable, recyclable plastic pallets with a fitted rain hood to allow storage outdoors. Bags stored individually must be protected from water damage.

For more information contact your nearest BarChip representative.

### Conformity

Conforms to ASTM C 1116 - Type III  
Conforms to EN 14889 - 2



BarChip MQ58

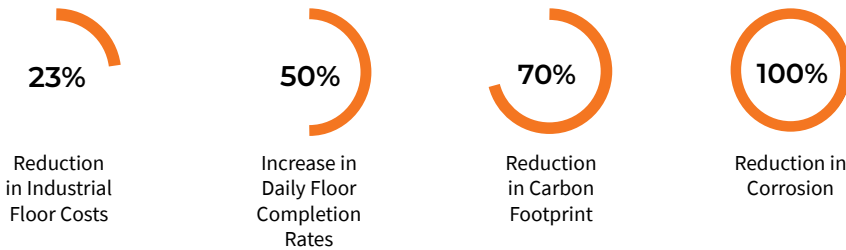
BarChip MQ58  
Macro Synthetic Fibre



Easy Finish Fibre

Surface finish is a major problem for many fibre reinforcements. Protruding fibres and fibre patches are common areas of concern. BarChip MQ58's uniquely engineered design and material composition ensures it remains embedded below the concrete surface without any changes to normal finishing processes. BarChip MQ58 achieves a fibre free surface with all common finishing techniques.

BarChip MQ58 Delivers Real Results.



Reinforcing Over 5 Million m<sup>2</sup> of Flooring Works

Environmentally Friendly Concrete Reinforcement

BarChip synthetic fibre reduces carbon footprint compared to steel fibre and steel mesh alternatives. We've analysed the carbon footprint of a nominal 175 mm thick, 100,000 m<sup>2</sup> commercial floor reinforced with 5 kg/m<sup>3</sup> BarChip, 25 kg/m<sup>3</sup> steel fibre and 2 layers of steel mesh.

Steel Fibre kg CO <sub>2</sub> e	Steel Mesh kg CO <sub>2</sub> e	BarChip Fibre kg CO <sub>2</sub> e	Total Carbon Saving vs. Steel Fibre (kg CO <sub>2</sub> e)	Total Carbon Saving vs. Steel Mesh (kg CO <sub>2</sub> e)
1,060,937	974,000	243,250	817,687	730,750



ENVIRONMENTAL PRODUCT DECLARATION  
EPD Registration #: S-P-02055

That's Equal To



259

Tonnes of waste recycled instead of land filled.



21,191

Tree seedlings grown for 10 years.



121

Homes electricity use for one year.

How much carbon could you save by choosing BarChip synthetic fibre reinforcement?

BarChip Inc.

info@barchip.com

N. America: +1 704 843 8401

Australia: +61 1300 131 158

EMEA: +353 (0) 1 469 3197

Asia: +65 6835 7716

S. America: +56 2 2703 1563

Brazil: +55 19 2121 5417



Distributors are located in other regions. For contact details visit [www.barchip.com](http://www.barchip.com).

Disclaimer: This information has been provided as a guide to performance only, for specific and supervised conditions. The user is advised to undertake their own evaluation and use the services of professionals to determine the product suitability for any particular project or application prior to commercial use. ISO 9001:2015 © BarChip Inc. 2021. PSMQ58\_2021\_2.

[www.barchip.com](http://www.barchip.com)